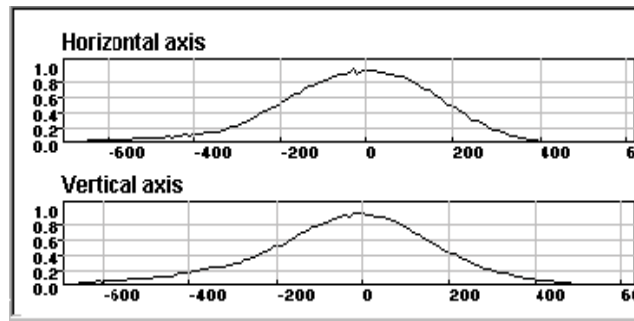
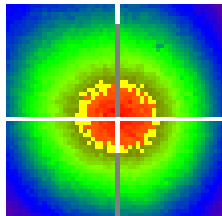
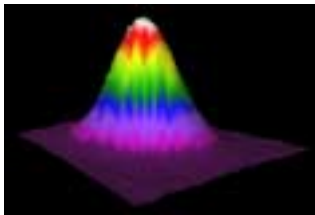


Diode Pumped Infrared CW and Q-switched Lasers

Brimrose designs and manufactures cost effective compact diode-pumped Nd:YAG and Nd:YVO4 lasers. Our lasers exhibit low noise, high stability, high efficiency, high reliability and excellent laser beam quality. Currently available products include compact Diode-Pumped CW, passively and Acousto-Optically Q-Switched Infrared Lasers.

Specifications

| | |
|-------------------------|---|
| Output power (CW) | 30, 50, 100, 150, 200, 300, 350, 500 mW |
| Output power (Q-switch) | Pulse width 20-40 ns, 50 mW average @ 1kHz Pulse Repetition Rate. Other Pulse Widths and Rep. Rates possible if required. |
| Wavelength | 1060 nm |
| Mode | TEM ₀₀ |
| Beam roundness | >90% |
| Beam diameter | < 1 mm |
| Beam divergence | < 1.2 mrad |
| Operating Temperature | -10 to +50° C |
| Power Stability | <5% over 2 hours |
| Weight | <1kg |



For more information please contact Dr. Pranay Sinha :

psinha@brimrose.com or lasers@brimrose.com

Brimrose Corp. of America
5024 Campbell Blvd.
Baltimore, Maryland 21236
Tel: 410-931-7200
Fax: 410-931-7206
www.brimrose.com